

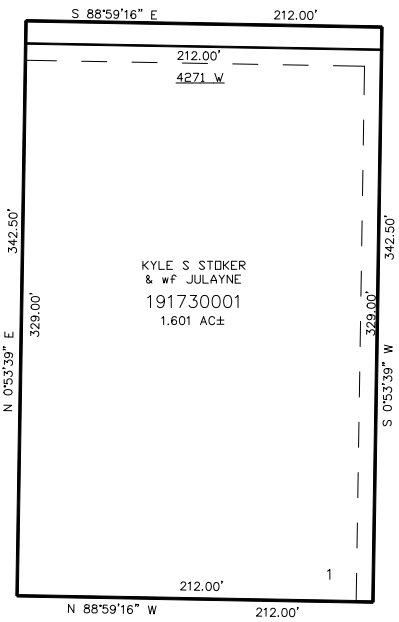
PART OF THE SW.1/4, OF SECTION 21, T.7N., R.2W., S.L.B. & M.  
**STOKER SUBDIVISION**

IN WEBER COUNTY  
SCALE 1" = 60'

TAXING UNIT: 19

SEE PAGE 9-2

3600 NORTH ST.



SEE PAGE 9-2

SEE PAGE 9-2

SEE PAGE 9-2

10' UTILITY & DRAINAGE EASEMENTS EACH  
SIDE OF PROPERTY LINES AS INDICATED  
BY DASHED LINES EXCEPT AS OTHERWISE  
SHOWN.

FOR COMPLETE ENG DATA SEE  
ORIGINAL DEDICATION PLAT IN  
BOOK 56, PAGE 27 OF RECORDS.